

INTRODUCING ATL1


760 West Peachtree Street NW - Atlanta, Georgia 20208

DataBank, in collaboration with Georgia Tech, is proud to introduce our latest state-of-the-art facility currently under construction in Midtown Atlanta, GA. The four-story facility will provide both high performance computing space and traditional colocation space. Georgia Tech will anchor the northern section of the new CODA Technology Square mixed-use development to meet burgeoning high-performance compute research needs, as well as provide the adjacent CODA community direct access to fiber networks, datasets, expertise, and services.

This dynamic project is DataBank's first in the Atlanta market, and is open for business. The 98,300SF facility will provide over 37,000SF of slab and 36" raised-floor space for build-to-suit client deployments. The Atlanta data center will offer network availability to multiple top-tier dark fiber providers with redundant backbone connectivity, cross connects to on-premises carriers, connectivity to public cloud providers, and peering fabric and blended-bandwidth solutions to meet any business requirement. Utility feeds will initially provide more than 8.3 MW's of critical IT power. Security measures include round-the-clock on-site security personnel along with dual factor authentication (card and biometric) on exterior entry and all data center entrances.

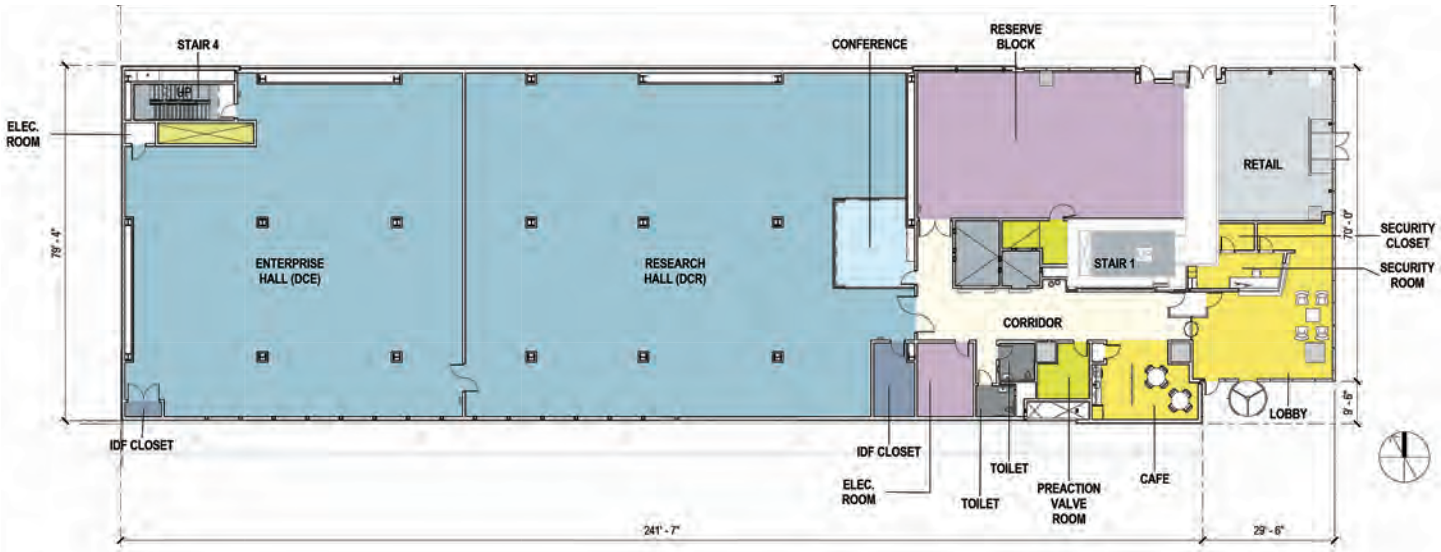


PROJECT DESCRIPTION | AT A GLANCE

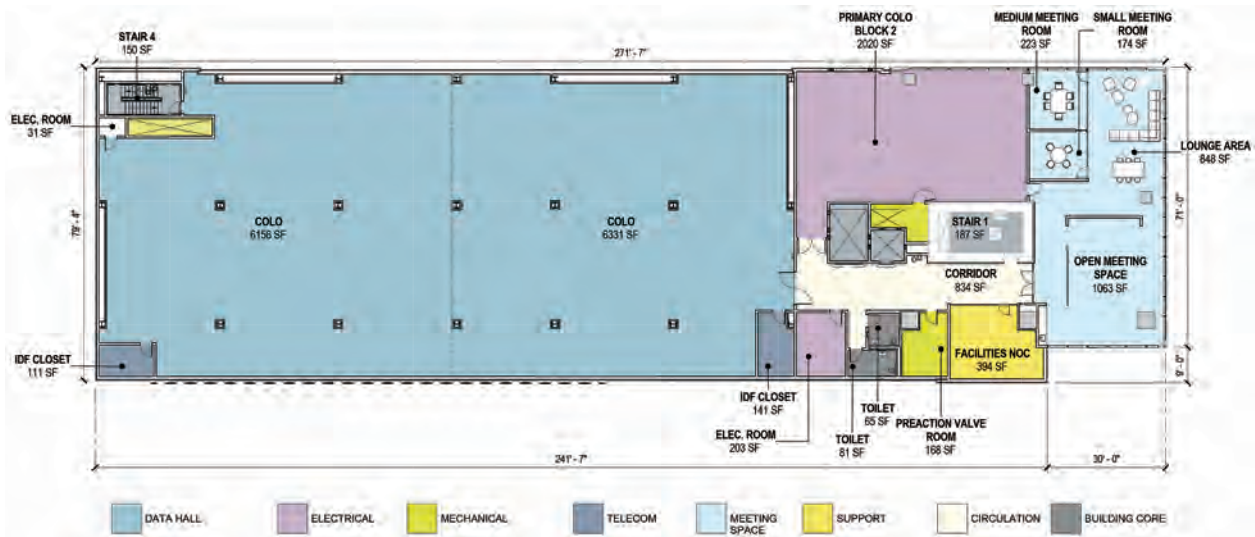
<div> ATL1  </div> <div> Region: Southeast Metro: Atlanta DC Square Ft: 40,000 Tier Design: 3 Facility Type: Dedicated </div>	<div> Support </div> <div> Up Time SLA 100% On-Site Support 24x7x365 Remote Hands Yes Smart Hands Yes </div> <div> Compliance Audit </div> <div> PCI-DSS Yes SSAE-16/18 Yes SOC 1 Type II Yes SOC 2 Type II Yes HIPAA Ready Yes </div>	<div> Network Connectivity </div> <div> Meet-Me-Rooms 2 On-Site Network Providers Level 3, Zayo, Fiberlight, AT&T, Comcast Fiber Entries 2 Carrier Neutral Yes </div> <div> Power </div> <div> Power MW 10 MW's AC 120 Yes AC 208 Yes AC 3P Yes Critical Power Total 8.3 MW Power Design N+2 </div> <div> Cooling </div> <div> Max Cab Density Air 25kW Max Cab Density Chilled Door 100kW Cooling Design N, N+1, 2N </div> <div> Platforms </div> <div> > Colocation > Cloud > Cabinets Cages Suites </div>
--	--	--

FLOOR PLANS

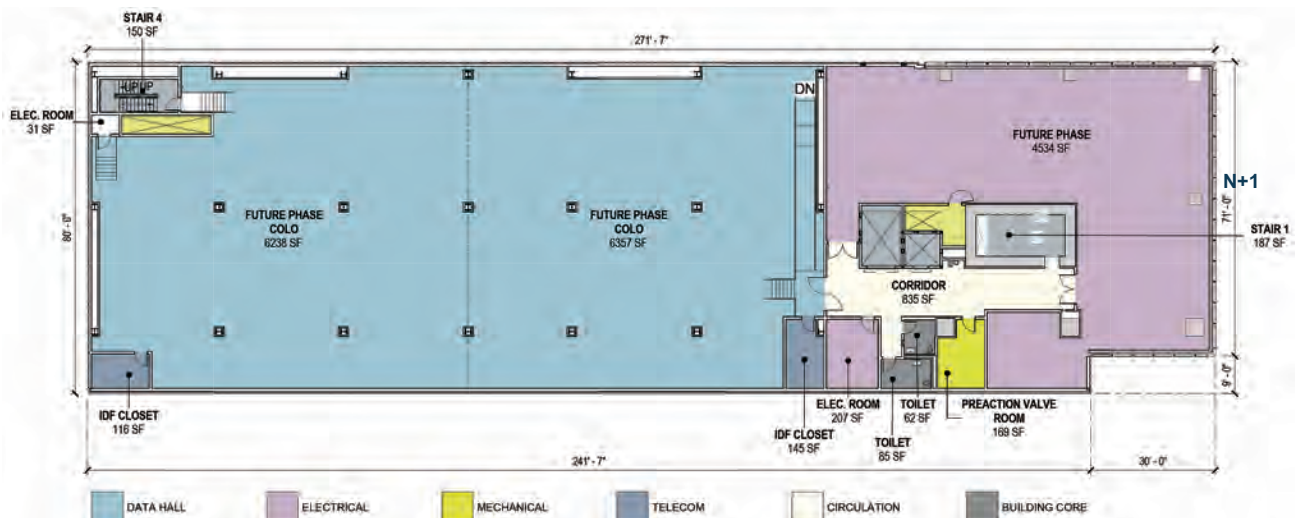
Data hall module | Level 1 HPC **LEASED**



Data hall module | Level 2 Colo **AVAILABLE**



Data hall module | Level 3 Colo **AVAILABLE**



FACILITY SPECIFICATIONS

SPACE OPTIONS

- Purpose-built 98,300SF facility with over 40,000 SF of slab and 36" raised floor space
- Designed to accommodate racks drawing from 6 to 55 kW per rack
- Georgia Tech is the anchor tenant with 1,500 kW of high performance computing power and 500 kW of OIT space
- 1,200 kW of 6,300 kW colocation raised floor space under construction and available Q1 2019
- Designed to meet individual customer needs
- Uptime Institute TIER III Design Certification
- Private custom suites, cages, and cabinets available
- Dedicated office, storage space

NETWORK AND CONNECTIVITY

- Diverse points of entry
- Dual MMR (Meet-Me-Room) design for true diversity and maximum resiliency
- Southern Crossroads Node on Site (SoX)
- Carriers: Level 3, Zayo, Fiberlight, AT&T and Comcast fiber serve the site
- Carrier and network-neutral
- Easy carrier access
- Managed Internet service supporting both IPv4 & IPv6, utilizing a multi-carrier blend with fully redundant routing infrastructure

POWER

- 19.8 kVA of utility power provided by Georgia Power via underground duct banks into below grade transformer vaults
- 8.3 MW of critical IT load delivered in a combination of N, N+1 and 2N redundancy
- HPC space: 1 x 1,500 kW dedicated and scalable kinetic energy storage flywheel UPS power block provided for power conditioning and controlled high-performance compute shut down.
- Colo space: 4 x 1,700 kW UPS power blocks serving the 1st, 2nd and 3rd floors
- 480V power delivered to the PDUs
- Roof mounted 2,500 kW generators provide 24 -hour on-site fuel supply for each generator
- Ability to provision additional utility power as needed
- Metered power (kW & kWh) at the PDU

COOLING

- Redundant HVAC design, temperature and humidity with a target annualized 1.22 PUE
- Efficient cooling systems designed to support high density computing

- HPC space: rear door heat exchangers designed to efficiently remove heat from 40-45 kW racks
- Colo space: Recirculating chilled water CRAH units along perimeter of data hall
- Chilled water plant with series style economizer and elevated chilled water supply temperatures 60°F-70°F
- Configurable to customer needs (N, N+1, 2N)
- Hot-aisle/cold-aisle configuration with opportunities for containment
- Designed to support 175 - 250+ Watts/SF of computing power
- Anti-static raised flooring and overhead cable runs allow unobstructed cold air delivery

SECURITY

- On-site security and support personnel 24x7x365
- Five layer security including a man trap with turnstile
- Monitored security cameras and intercom system
- Secure equipment locations on roof and underground
- Dual-factor authentication (card and biometric) on exterior entry and all data center entrances
- Monitored camera surveillance on all ingress/egress points and critical areas
- Video and access log minimum retention for 90 days to meet audit requirements
- Custom physical security controls available for customer deployments

COMPLIANCE

- On-site security and support

FIRE PROTECTION

- Separately zoned data halls
- VESDA
- Dual interlock pre-action (data halls, MMRs, critical equipment)

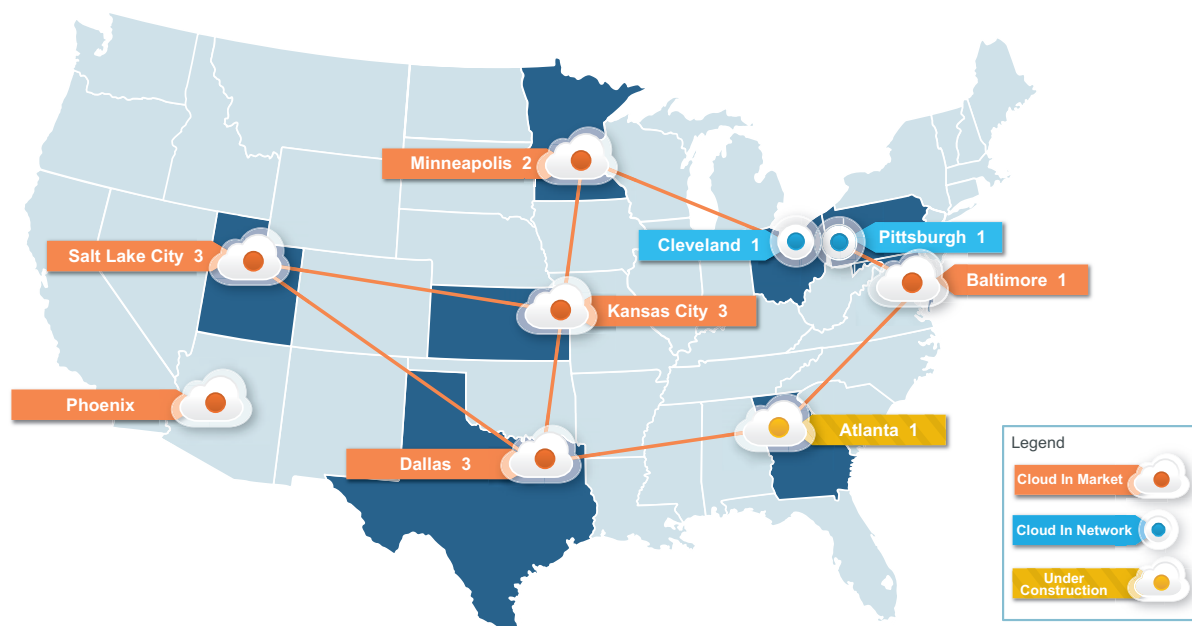
STRUCTURE

- 3 stories above grade, 1 story below grade
- Steel structure, concrete floors - 250 lbs/SF
- Slab-to-slab clearance 20'6" to 22'0"
- Unistrut grid 13'6" from finished floor
- Floor 1: concrete slab without raised floor
- Floors 2, 3: 36" raised floor over concrete slab with tiles rated at 1500 lbs/tile

SERVICES

Colocation
Cloud & Hybrid Solutions
Security & Compliance
Managed Services

LOCAL SERVICE. NATIONAL REACH.



With an uncompromising focus on security and compliance, DataBank offers businesses, especially those with mission critical infrastructure requirements, a full spectrum of services starting with a foundation of purpose-built data centers designed to meet a variety of colocation requirements. As those needs evolve, we

offer a suite of solutions including fully managed services, hybrid cloud solutions and complementary network services, along with access to public clouds and peering exchanges. Currently in 8 markets with 15 data centers, DataBank continues to make significant investments in strategic markets to drive the success of our clients.

WHY DATABANK?



OUR APPROACH

Our consultative approach results in customers getting the most flexible solution available to meet short and long-term business objectives.



SECURITY

Security and compliance is in our DNA. Trust that you have a dedicated team of security and compliance engineers for all of your colocation and cloud deployments.



ACCOUNTABILITY

Accountability isn't just an SLA. We provide real-time analytics on the performance of all of your systems in our sophisticated customer portal including audit support documentation and history.



SERVICE

DataBank's data centers are staffed 24/7/365 offering remote, managed, and smart hands services. Our U.S. based support team solves 95% of tickets without burdening our clients.



www.databank.com

Data Centers | Colocation | Connectivity | Cloud & Hybrid Solutions | Managed Services